

# SLEEVE COVERINGS ESTIMATE FORM



Company \_\_\_\_\_  
Attention \_\_\_\_\_  
E-mail \_\_\_\_\_

Phone # \_\_\_\_\_  
Fax # \_\_\_\_\_  
Quote Due \_\_\_\_\_

## SLEEVE SPECIFICATIONS

Quantity \_\_\_\_\_  
Color \_\_\_\_\_  
Wall Thickness \_\_\_\_\_  
Durometer \_\_\_\_\_

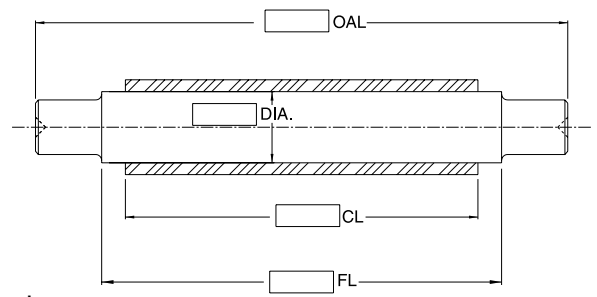
### Material:

- Urethane
- Neoprene
- Vinyl
- Other \_\_\_\_\_

## Installed onto Supplied Rollers

Roller DIA. \_\_\_\_\_  
Finished DIA. \_\_\_\_\_  
Face Length \_\_\_\_\_  
Covered Length \_\_\_\_\_  
Over All Length \_\_\_\_\_

Is there sleeve/coating currently on:  Yes  No



Roller has:

- Sprockets-Qty. \_\_\_\_\_
- Grooves-Qty. \_\_\_\_\_

## Supplied Loose

For Roller DIA. \_\_\_\_\_  
Length \_\_\_\_\_

allow extra 2" for trimming after installation

Sleeve installation tool required:  Yes  No

Installation instructions required:  Yes  No

## Special Instructions / Notes: